

Marvellous May at St Mary's



'Oh wow, it's wonderful' the wedding couple says

This is said when a wedding couple is shown the inside of St Mary's Church. Often couples have not seen inside before.

*It is not just wedding couples who are overawed,
everyone is!*

During May you are invited to visit St Mary's church to see for yourself and join in a varied programme of activities as part of enjoying new freedoms after so many Covid restrictions.

*You will be welcome to attend any or all of the activities
described in this programme.*

All monies raised will go to restoring our murals.

St Mary Bromley, 63 College Road, Bromley BR1 3QG
Nearest bus stop Morgan Road for 126, 314, 336 and 261.
Yellow lines on College Road and noon -2pm, parking restrictions locally.
<https://www.stmarys-bromley.org.uk> (QR code right)



Please come and visit the Church

Our building will be open during May between 9am and 5pm on Mondays, Wednesdays and Fridays plus Polling Day on 5 May. Refreshments will be available with special attractions as follows:

Monday 10 – 12noon – Grace Café with a wonderful selection of cakes.

Wednesday 10 – 12noon – Music from our own musical friends

Wednesday 2 – 5pm – Reading through the four Gospels

Friday 10 – 12noon – Knitting, join in as we aim to make a blanket of 96 squares

And walk round the building with a brochure that explains the principal features, decoration and stained glass which inspire our faith.

Art Display of painting and ceramics

4 May to 8 May (closed Friday, church service Sunday morning)

Cream Tea

**2.30 – 4.30pm Sunday 1 May
in the church building**

Our first event which begins our month of activities



The Bromley Boy Singers

**7pm Saturday 7 May
in the church building
adults £5.00, ages 3 to 18 £2.50**

The Bromley Boy Singers is a choir with a well-established reputation.

We are delighted to host a concert by them.



Plant Sale

**from 10am Saturday 14 May
in the church halls**

A large selection of plants, bric-a-brac, books and refreshments at very reasonable prices. Come early to avoid disappointment.



Ballet Belles

**2.30pm Sunday 15 May
In the Warwick Hall**

A window into RAD dance with delightful pieces to entertain us.



Choral Evensong

**4.30pm Sunday 15 May
in the church building**

Our choir leads
a traditional evening service
with glorious choral works.



Organ Recitals

**4pm Sunday 8 and 22 May
in the church building
*suggested donation £10***

Discover a range of
rich and wonderful
music from our
talented organists.
Includes tea and cake.



Christian Aid Week

**from 15 to 22 May
in the church building**

A display of the work of the major
relief and development agency
of 41 Christian churches
in the UK and Ireland.



**6pm Saturday 21 May
in the Warwick Hall
*adults £5.00, ages 3 to 18 £2.50***

An exuberant display of the
theatre arts that Harlequin
teach and perform.

Old Testament Live

**10am to 4.30pm Saturday 28 May
in the church building
*entrance £14***

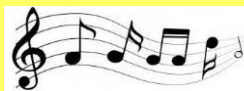
An adult day of fun and inspiration
to explore the Old Testament.

Run by Walk Through the
Bible. Please book with
the QR code in advance.



A Musical Miscellany

**3pm Sunday 29 May
in the church building**



An afternoon of many charming
musical pleasures.
Followed by tea and cake.



Platinum Jubilee Picnic

4 pm Friday 3 June

Join us with your picnic in the church grounds for a party
to celebrate Her Majesty's Platinum Jubilee.

Soft drink and cakes supplied.

St Mary's Church

People ask 'When was the church built?'
The answer is 'Over some period of time.'

Original construction, 1863

The original church, comprised a somewhat stark, oblong building with bell cote. It endured the obloquy of being denounced by 'The London Standard' as "one of the ugliest unfinished churches near London".



Further development, 1881

The year 1881 saw a considerable advance with the addition of a chancel, vestries and organ chamber.

Addition of Transepts, 1892 and 1900

The south transept was dedicated on 10th January 1892. The north transept and enlarged vestries were consecrated on 13th October 1900,

The entry porch, 1997

In 1997, a handsome and spacious oak framed entry porch was added. It won first prize at the Bromley Designs Awards Scheme 1998 for the best extension to an historic building.

An illustrated document (pdf) that describes the history of the building and the many lovely features it contains can be obtained here.

